

Manual for the Multiple Filter Automatic Splitting Technique (MFAST) processing codes, Version 2.2

By Andreas Wessel¹, Martha Savage¹ and Nick Teanby². Some codes were modified from versions written originally by Alex Gerst, Natalie Balfour and Sonja Greve. This program replaces earlier versions of the codes, some of which were previously called “doass”, and others were versions 1.0 through 2.1 of MFAST.

Copyright 2010, 2013, 2015, 2016 All rights reserved. If you wish to use these codes for a profit-making enterprise please contact the authors. These codes may be used free of charge for educational purposes if the following papers are referenced in any resulting publications:

Savage, M. K., A. Wessel, N. Teanby and T. Hurst, Automatic measurement of shear wave splitting and applications to time varying anisotropy at Mt. Ruapehu volcano, New Zealand, *Journal of Geophysical Research*, *J. Geophys. Res.*, 115, B12321, doi:10.1029/2010JB007722, 2010

And

Teanby, J.-M. Kendall, and M. van der Baan. Automation of shear-wave splitting measurements using cluster analysis. *Bulletin of the Seismological Society of America*, 94(2):453–463, 2004.

Wessel, Andreas. Automatic shear wave splitting measurements at Mt. Ruapehu volcano, New Zealand. Master’s thesis, Victoria University of Wellington, New Zealand, 2010.

Contents

1. Introduction	3
1.1 Differences between this and previous versions:	3
1.2 Basic knowledge of geophysical terms	4
2. Description of the method.....	4
2.1 Filtering	4
2.2 Signal to noise ratio calculation	8
2.3 Basic measurement technique	8
2.4 Grading criteria	15
2.5 Averages.....	16
2.6 Use of multiple filters.....	18
2.7 System Requirements.....	18
3. Prerequisites to use the programs	18
3.1 Customize paths and variables	19
3.2 Programming style and syntax	19
4. Download and convert data	20
4.1 Prepare data for splitting measurement (I).....	20
5. Processing of data for splitting measurement	21
5.1 Prepare data for splitting measurements (II).....	21
5.2 Set the picks up in the proper headers and check inconsistencies	23
5.3 Find best filter	23
5.4 Calculate signal-to-noise ratio.....	24
5.5 Create configuration file and measure shear wave splitting	24
5.6 Display results.....	29
5.7 Further ways to select measurements:.....	31
6. Automatic measurement and monitoring tool.....	32
7. Utilities.....	33
8. Third party software used for this study	34
9. Cheat sheet	34
Quick command guide:.....	35
10. Trouble Shooting	36
References.....	37

1. Introduction

To process large amounts of seismograms it is essential to automate the work flow as much as possible. We do that here for shear wave splitting measurements on local earthquakes. Several shell scripts, GMT (Wessel and Smith, 1998) scripts and SAC (Goldstein and Snoke, 2005) macro files have been developed to automate processes, especially when the tasks were recurrent. When writing these scripts, the UNIX philosophy was followed, so several small tools were used in combination to deal with complicated tasks. For shear wave splitting measurements, events have to be selected and processed, and measurements have to be evaluated and displayed. A description and manual of the developed programs is given here, and there is more information in the comments at the beginning of most of the scripts. Many programs can most conveniently be invoked by the main program **mfast_mfm** and its options, but it is also possible to do the processing step by step (mfm stands for “multiple filter method”). To get a quick overview of what to do, see the cheat sheet (Section 9) or the script **do_station_mfm** in directory **sample_data**. Shell commands, i.e. commands that have to be entered in a terminal, are indicated by formatted text and/or a prepended \$-sign, e.g. \$ whoami means that you are supposed to type whoami in a terminal to execute this command. (The command whoami prints the username to the screen and is only used here as an example. Note that \$string without a space between the dollar sign and the string denotes a shell variable.) Script and macro names are in bold, variable names are in italics and directories and filenames are both italics and bold.

1.1 Differences between this and previous versions:

Please see the *00README* file in the main *mfast_package* directory to find recent changes. The differences between MFAST 1.0 and 2.0 are summarized here.

The main differences up until version 2.0 were in bug fixes in various parts of the codes and scripts, and in some enhancements for the utilities. But for version 2.0 we also implement a new version of the Silver and Chan degrees of freedom calculation. Extensive re-deriving of the equations in the Silver and Chan (1991) paper led us to find a bug in the calculation of the covariance matrix (fixed in version 1.4 and above) but also to find that coefficients in the appendix of Silver and Chan for calculating the degrees of freedom were wrong. These are now corrected for version 2.0 and above, and a paper has been published in JGR to explain the variation (Walsh et al., 2013)

Version 2.1 includes a few more bug fixes and also some more materials to help in getting the programs installed and in using it in different types of regions. Specifically, initially local/regional earthquakes were targeted but we have also added versions with tags “verylocal” for areas with earthquakes that are only a few km or less away from the stations.

Version 2.2 also has a few bug fixes and has updated all the main programs to work with GMT 5—previous versions work with GMT 4 and earlier versions only. The programs in the utilities directory have not yet been modified for GMT 5, however. Most of the bug fixes had to do with the verylocal commands but we also found an error in the create_ass_ini programs that had been allowing poor delay time measurements to be included in the cluster analysis. Please see the file named 00README-mfast-v2.2 for all the details.

1.2 Basic knowledge of geophysical terms

The programs described in this manual are used to measure shear wave splitting to retrieve information about the anisotropy of a medium. The method is described and compared with manual measurements in Andreas Wessel's MSc thesis (Wessel, 2010) and a publication (Savage et al., 2010). In addition, the shear wave splitting tutorial of Savage (1999) and the original publications on the shear wave splitting measurement algorithm (Silver and Chan, 1991) (SC91) and the cluster analysis method (Teanby et al., 2004) (SPLIT) are recommended for further reading.

2. Description of the method

Here we present a detailed description of the method. The JGR version has had the details cut so as to keep it more in line with JGR style. The method is based on the SC91 algorithm and the SPLIT cluster analysis method. An overview of the processing steps is illustrated in Figure 1. The SC91 analysis is carried out on multiple measurement windows and cluster analysis determines the best window. The cluster that has the minimum variance is chosen as the best cluster, and a final SC91 measurement is made based on the window that gives the minimum error bars on the splitting parameters within the cluster. The main advance presented here is in automatically choosing the range of the measurement windows to use for the cluster analysis based on the period of the event. As part of this advance, we use multiple filters to find the frequency bands with the best signals as measured by the product of the signal to noise ratio (SNR) and the filter bandwidth. Furthermore, automatic grading is carried out to determine the best events. These extensions to the SC91 and SPLIT techniques greatly simplify the processing of large datasets, with the only manual step being in picking the *S* arrival time. *S* arrival times may also be picked automatically using other codes and then used in this program, giving similar results to hand-picked arrivals (e.g., Castellazzi et al., 2015)

2.1 Filtering

Since local broadband seismic data are often contaminated by noise, raw data can rarely be processed. The application of a bandpass filter is important for shear wave splitting measurements, because a sufficiently high SNR is necessary for a high quality measurement (Figure 2). However, narrow band filters should be avoided because they can lead to cycle skipping (Section 2.4). Therefore we favor broader band filters when possible. Instead of applying a broad filter to all data or manually selecting a filter for each measurement, a bandpass filter is determined for each event on the basis of a SNR criterion and the width of the filter, as discussed below.

A predefined set of 14 bandpass filters (Table 1), with typical corner frequencies from previous studies (Gerst, 2003) is tested for each event and the best filter is selected. Using different filters (in SAC macro `findfilt_prod.m`) would make this method applicable to broad classes of data beyond the application to local *S* waves described herein. For example, the SPLIT codes can be used on teleseismic data to study mantle anisotropy (Greve et al., 2008) and straightforward modifications of the codes described herein could be used to create automatic SKS measurements. Also the commands `mfast_mfm_verylocal` and `mfast_mfm_alps` use higher frequency filter bands. If short period data are used, the long period filters should be modified since they will effectively be cut off at shorter periods than expected, and some of the resulting filters will give nearly identical responses.

For particular datasets, different sets of filters may be more appropriate, although those listed in Table 1a provide reasonable starting values for most microseismic studies, while Table 1b shows those used for high-frequency arrays for earthquakes within only a few km of the stations. The bandwidth is calculated from $(hi/2lo)$ where hi is the high frequency and lo is the low frequency.

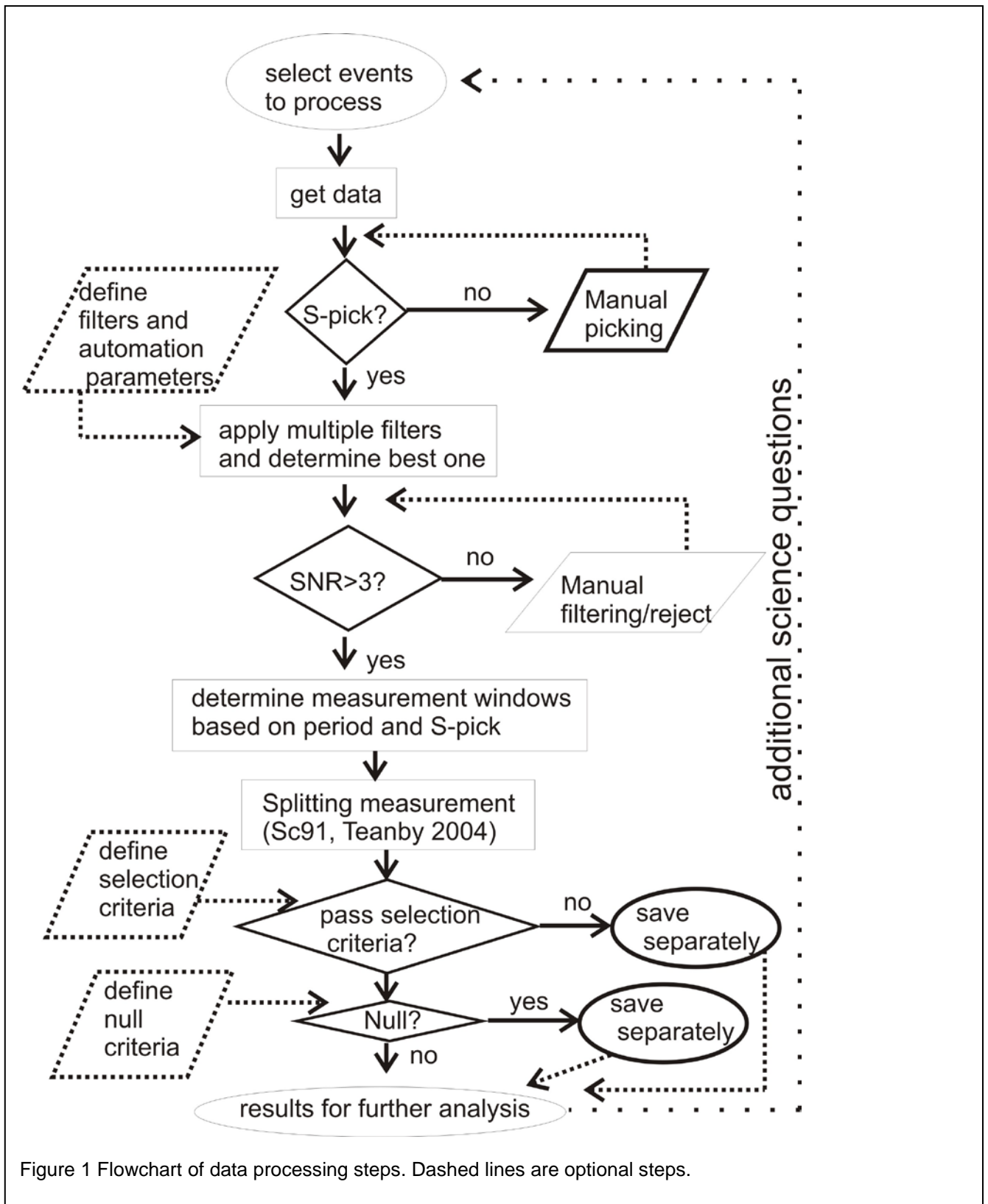


Figure 1 Flowchart of data processing steps. Dashed lines are optional steps.

Table 1a. Filters tested. All filters are two-pole Butterworth filters (in file **findfilt_prod.m** in **macro** directory)

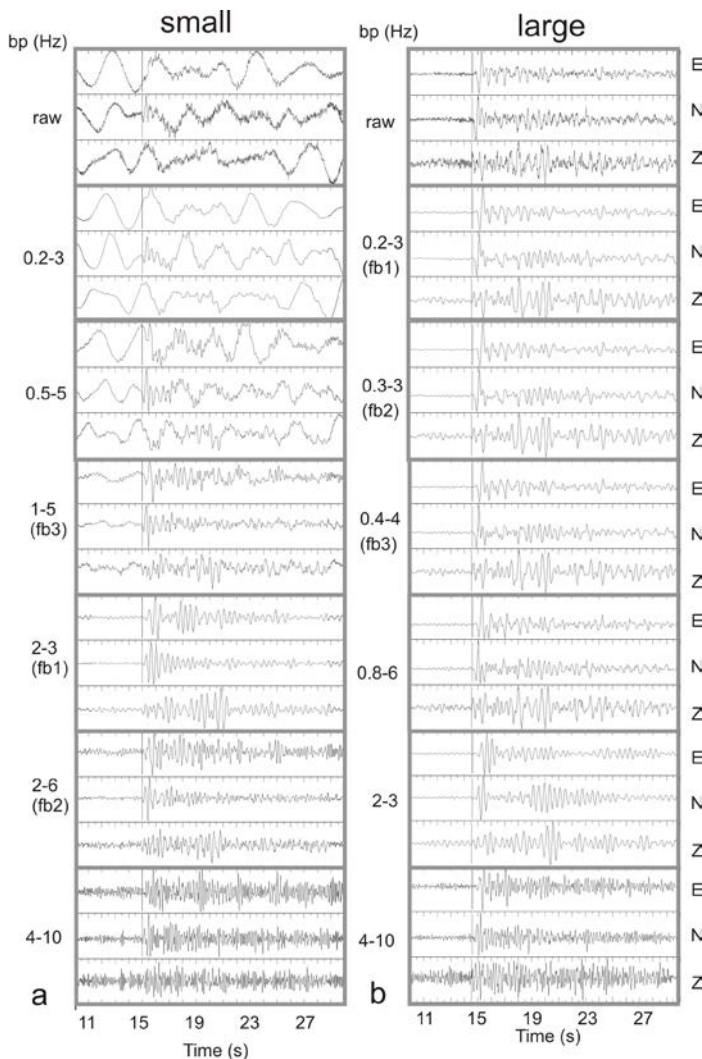
Filter number	Low freq (Hz)	High freq (Hz)	Bandwidth (octave)
1	0.4	4	5
2	0.5	5	5
3	0.2	3	7.5
4	0.3	3	5
5	0.5	4	4
6	0.6	3	2.5
7	0.8	6	3.75
8	1	3	1.5
9	1	5	2.5
10	1	8	4
11	2	3	0.75
12	2	6	1.5
13	3	8	1.3
14	4	10	1.25

Table 1b. Filters tested for the “very_local” codes. All filters are two-pole Butterworth filters (in file **findfilt_prod_verylocal.m** in **macro** directory)

Filter number	Low freq (Hz)	High freq (Hz)	Bandwidth (octave)
1	1	5	2.5
2	1	8	4
3	1	15	7.5
4	1	30	15
5	3	5	0.83
6	2	8	2
7	3	15	2.5
8	3	30	5
9	5	10	1
10	5	15	1.5
11	5	30	3
12	5	45	4.5
13	10	20	1
14	10	45	2.25

2.2 Signal to noise ratio calculation

The measurements require several parameters, which could be checked and modified in other studies (Table 2). A new SNR for the filtered data is calculated from the same window length (t_{win_snr}) for both noise and signal, where the noise window precedes the S arrival (in this section, defined as time 0 s) and ranges from $(-t_{win_snr} - t_{err} \text{ to } -t_{err})$ where the offset t_{err} is chosen to account for inaccuracies in the S arrivals (here we use $t_{err} = 0.05$ s so the window is -3.05 to -0.05 s). The signal window follows the S arrival as $(t_{err} \text{ to } t_{err} + t_{win_snr})$ (0.05 to 3.05 s). The noise window is chosen to precede the S arrival directly to include the signal-generated noise of the P coda, because such signal-generated noise will affect the S wave analysis. The ratio of the rms amplitude of the signals in the east and north components are averaged to calculate the SNR. No measurements with $SNR < SNR_{max}$ (3 here) are considered for interpretation. In the applications discussed herein, the waveforms filtered with the three filters giving the highest value of the product of the filter bandwidth in octaves and the SNR (if there are three or more filters fitting the SNR criterion) are analyzed. This allows us to examine the frequency dependence of the results, and in averaging the parameters, it ensures that the measurements that are most stable with frequency contribute most to the final measurement. Earlier versions of the code (called **doass**) used only the SNR itself rather than the SNR-bandwidth product, and were more prone to cycle skipping, relying more heavily on later grading to weed out poor measurements (Johnson et al., 2010; Savage. et al., 2010).



2.3 Basic measurement technique

The shear wave splitting parameters of fast polarization (ϕ) and delay time (dt) are measured by applying an inverse splitting operator, which is determined by a grid search over possible values (Silver and Chan, 1991). The more a certain operator removes the splitting of the investigated

Figure 2 application of different bandpass filters. Although a change in frequency content is visible on the top trace (raw data), the S-wave is masked by long period noise. The application of a bandpass filter (BP) emphasizes the signal, but the narrow 2-3 Hz filter appears “ringy” and is susceptible to cycle skipping. (a) small event (M=3.8) recorded at station LHOR. The best filters as measured by the maximum of the product of the SNR and the bandwidth (fb1 through fb3) are at high frequencies, but the best frequency still has a narrow 1-Hz bandwidth. (b) larger event (M=4.2), which has better response at long periods.

waveform, the smaller the eigenvalue λ_2 of

the covariance matrix of particle motion $c(\phi, dt)$ becomes. This is equivalent to maximizing the linearity of the particle motion (Silver and Chan, 1991). The inverse operator that removes the shear wave splitting best gives the resultant shear wave splitting parameters. Contours of λ_2 for all the operators considered give a measure of the confidence region by using an F-test (SC91) (Figure 3, 4 f). This part of the code has been updated based on Walsh et al. (2013) with new coefficients to calculate the number of degrees of freedom, in general increasing the error bars in version 2.0 and above compared to earlier versions. Here we search the parameter space in units of 1° and a time unit depending on the scale of the problem for all fast directions and for delay times from 0.0 to $tlagmax$ (Table 2), where $tlagmax$ is 1.0 s for the Savage et al. (2010) study. For some studies in which there are many local earthquakes close to a volcano, we used $tlagmax=0.4$ s for the local events (Johnson et al., 2010; Savage et al., 2008; Savage. et al., 2010) [codes with appendix `_local` in the name, e.g., `assi_mfm_local`] and for high frequency instruments with even closer earthquakes, 0.2 s [`_verylocal`, e.g., `assi_mfm_verylocal`]. For SKS measurements, $tlagmax$ can be 4 to 6 s (Greve et al., 2008; Savage et al., 2007). However, note that the original SPLIT Fortran codes, and also the codes here, reset $tlagmax$ to be an integer multiple of $(np2-1)*delta$, where $delta$ is the sample rate of the record and $np2$ is set in the FORTRAN include file `SIZE_np12int.h`.

The results of the grid search for one pair of shear wave splitting parameters can be dependent on the selected measurement window, i.e., the part of the waveform that is actually considered for the measurement. To address this dependency, the analyst usually performs a measurement several times with different measurement windows to confirm the stability of the resulting parameters.

Table 2. Parameters

<i>Parameter Name</i> : description and (script name in which it is located)	Suggested Range	Expected sensitivity	Value used in this paper (parentheses for values used in <code>mfast_mfm_verylocal</code>)
<i>hi</i> and <i>lo</i> filters (findfilt_prod.m)	Depends on instruments and dataset	High	See Table 1a (Table 1b)
<i>t_win_snr</i> (window for SNR) (sn_rms_filtprod)	Average length of <i>S</i> wave train for dataset (2x dominant period of dataset)	Low	3 s (0.75 s)
<i>t_err</i> see explanation in text (designed to account for error in <i>S</i> arrival picks) (sn_rms_filtprod)	5 samples	Low	0.05 s (0.02 s)
<i>SNRmax</i> (misnomer): Minimum snr allowed to be processed (sn_rms_filtprod)	3 at minimum; more if dataset is sufficiently large	Medium	3 (1.5)
<i>tlagmax</i> : maximum lag	2x maximum	High	1 s

examined (create_event_ini.sh)	expected splitting However, note that <i>tlagmax</i> is reset in the Fortran code (see text)		(0.4 s)
<i>tlagscale</i> : scale on plots of error contours (plot_error_mfm.gmt; create_event_ini.sh But note that it may be reset within Fortran code zsplit.f)	<i>tlagmax</i>		<i>Tlagmax</i>
<i>dtlag_max</i> : maximum error in tlag to allow in inclusion for clustering (create_event_ini.sh)	<i>tlagmax</i> /4	High	<i>tlagmax</i> /4.
<i>t_win_freq</i> : window to calculate dominant frequency f_d (get_T2 in macro dir)	1.5 x <i>t_win_snr</i>	Low	3 s (0.75 s)
<i>Tmid</i> : Dominant period, (calculated in create_event_ini.sh)			1/ f_d
<i>fdmin</i> , <i>fdmax</i> : minimum and maximum allowed f_d (create_event_ini.sh)	1/ <i>t_win_snr</i> to sample rate/10	High	0.3 to 8 Hz 0.3 to 16 Hz
<i>N_wbeg</i> : number of start times tested) (<i>nwbeg</i> in mfast_config or create_event_ini.sh if not set in mfast_config)	2-5	low	5
<i>N_wend</i> : number of end times tested (<i>nwend</i> in create_event_ini.sh)	>10		15< <i>Nwend</i> <25; <i>Nend</i> Starts as $int((w4-w3)/ \Delta T_{end})$ but modified depending on ΔT_{end}
ΔT_{beg} : time step size between window start times (<i>dtbeg</i> in create_event_ini.sh)	Should depend on f_d	Low	0.2 s, but decreased to the smaller of 0.1 or $((S-P)/2)/N_{beg}$ if <i>S-P</i> time is too small
ΔT_{end} : time step size between window end times (<i>dtend</i> in		High	0.08 s to start--increasing and decreasing to make

create_event_ini.sh			Nend between 15 and 2. Calculated from $w3$ and $w4$
$Tbeg0$: first time to start window—closest to S arrival: line (2) in Figure 3) ($toffbeg$ in create_event_ini.sh)			0.3 before S pick but 0.3 is decreased to the smaller of 0.1 or $((S-P)/2)/(Nbeg+1)$ if $S-P$ time is too small.
$Tbeg1$: last time to start window—furthest from S arrival; line (1) in Figure 3 (zass_mfm)			S time – $(toffbeg+(Nbeg*\Delta T_{beg}))$
$Tend0$ (first time to end window; line (3) in Figure 3) (create_event_ini.sh —there it is called $toffend$, and $w3$)			S time + $t_{mid}/1.2+0.15$ where $t_{mid}=1/fd$
$w4$: desired last end window time			$t_{mid}*2.5+0.15$
$Tend1$: last time to end window; line (4) in Figure 3 (set in zass_mfm)			S time + $toffend$ + $Nend*\Delta T_{end}$
N_{min} : minimum number of points in an acceptable cluster (n_{min} in create_event_ini.sh)			5
M_{max} : maximum number of clusters ($maxnoclusters$ in create_event_ini.sh)			15
$var(k)$ Average variance of cluster k			
$phi(k)$ Average fast direction of cluster k			
$dt(k)$ Average delay time of cluster k			
$N_{meas}(k)$ Number of measurements in cluster k			
K_{best} Cluster number of the measurement with $var(k_{best}) = \min(var(k))$			
$Phidiff(k)$	$phidiff = abs(phi(k)-$		

	$\phi(k_{best})$		
$T_{diff}(k)$	$t_{diff} = (dt(k) - dt(k_{best}))$		
N_{beg} (number of start window times)		low	5

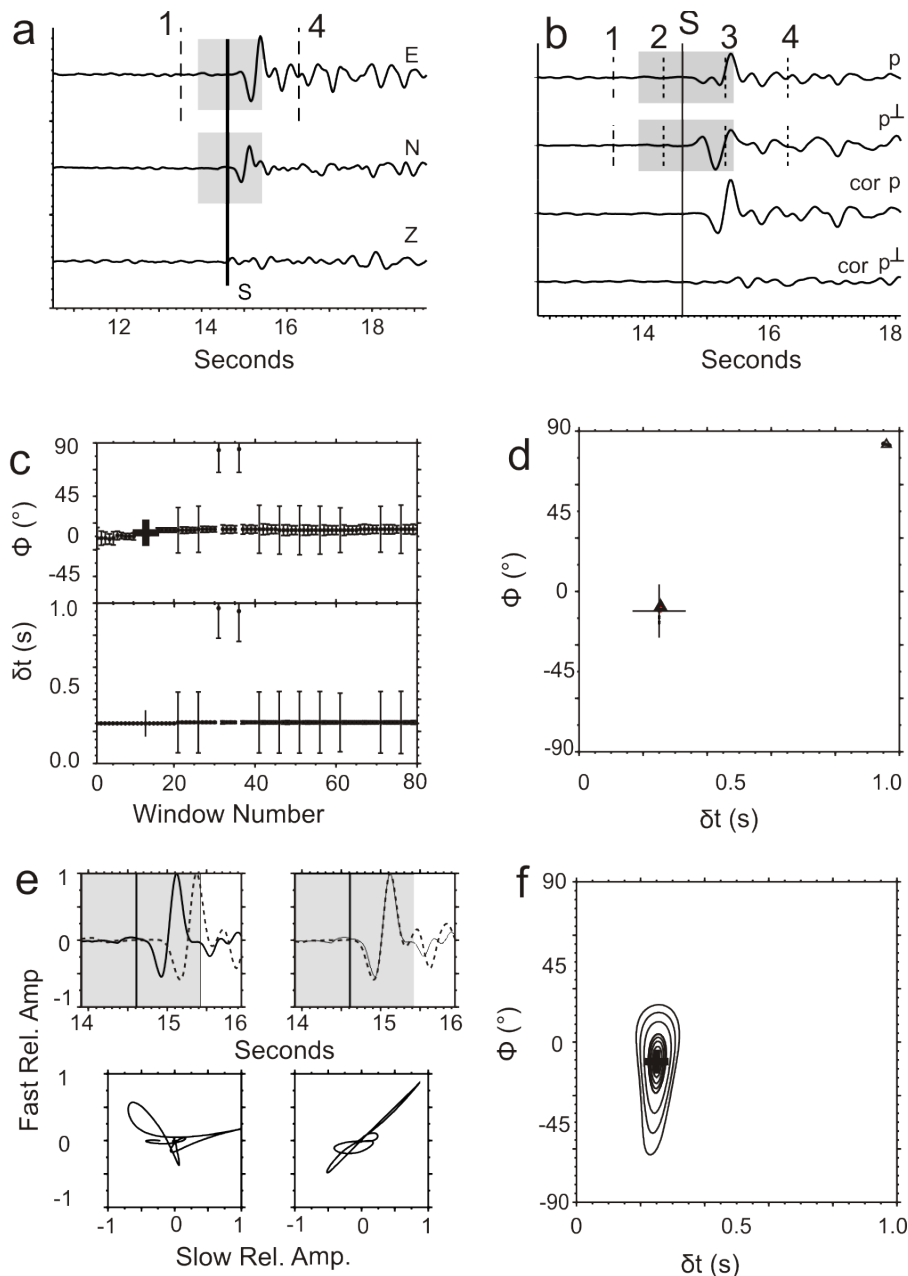


Figure 3 High quality, A grade (Table 3) measurement recorded at station LHOR for a regional event. The grey boxes in panels (a), (b) and (d) delineate the time window used for the final measurement. (a) filtered East (E) North (N) and vertical (Z) waveforms. The solid line is the S arrival. The dashed lines are the minimum start (1) and maximum end (4) times for windows used in the processing, as in (b). (b) the waveforms rotated into the SC91-determined incoming polarization direction (p) and its perpendicular value (p^\perp), for the original filtered waveform (top) and the waveforms corrected for the SC91-determined δt (bottom) for the window shown in grey. The straight black line is the S arrival. The two sets of dashed lines on either side of the straight line show the range of allowed starting (1 and 2) and ending (3 and 4) windows for the SC91 measurements. (c) ϕ and δt determined for each measurement window as a function of window number. (e) all the clusters of 5 or more measurements, with the large cross being the chosen cluster. (e) waveforms (top) and particle motion (bottom) for the original (left) and corrected (right) waveform according to the final chosen SC91 window. (f) contours of the smallest eigenvalue of the covariance matrix for the final chosen SC91 measurement. Numbers are described in text.

The SPLIT method published by Teanby et al. [2004a] automatically performs measurements for a large number of window configurations and then determines the most stable solution with a cluster analysis. The original method allows one to choose one set of configuration parameters for all measurements or to interactively choose measurement window times. In addition to fixing a few small bugs that we found in the codes, we extended the method to automatically generate a customized configuration file for each single measurement. Measurement window times relative to the S arrival are calculated based on the dominant frequency of the signal.

The dominant frequency f_d is calculated from a window (t_win_freq ; 3 s here) which follows the S arrival. But the maximum and minimum frequencies are limited so that the window lengths are not too long or too short. We used $0.3 \leq f_d \leq 8$ Hz (Table 2).

Teanby et al. (2004a) define the following variables, which we delineate in Table 2: The beginning of the analysis window T_{beg} is allowed to vary between T_{beg0} and T_{beg1} , [(1) and (2) in Figure 3b] with N_{beg} steps of ΔT_{beg} . Similarly, the end of the analysis window T_{end} is allowed to vary between T_{end0} and T_{end1} , [(3) and (4) in Figure 3b] with N_{end} steps of ΔT_{end} . The total number of analysis windows N is therefore given by $N = N_{beg}N_{end}$, and the shear wave analysis window is defined by $T_{beg} = T_{beg1} - (i - 1)\Delta T_{beg}$ for $i = 1 \dots N_{beg}$. Following suggested guidelines (Teanby et al., 2004), the minimum window (2-3 in Figure 3b) is chosen to be one period long (calculated from $1/f_d$), while the maximum window (1-4) is 2.5 periods long. The number of different measurement window end times N_{end} depends on the minimum and maximum window length. For short (long) measurement windows the standard step size between measurement windows of $\Delta T_{meas} = 0.08$ s is decreased (increased) so that N_{end} is between 15 and 25 (Table 2).

The minimum and maximum times of the measurement window start are less critical than the window end times (Teanby et al., 2004). We consider N_{beg} window start times ($N_{beg} = 5$) in our application of the cluster analysis, with ΔT_{beg} usually given as 0.2 s, so that $t = -0.3, -0.5, -0.7, -0.9$ and -1.1 s, relative to the S arrival. However, to minimize interference of the P wave for close earthquakes, if the time between the S and P arrivals ($T_s - T_p$) is less than 2.2 s, we make the shortest time window begin at $t = -0.1$ s and the longest time window is $-(T_s - T_p)/2$; the other three time window start times are scaled accordingly. The total number of measurement windows is thus between 75 and 125, and is directly proportional to the processing time of the shear wave splitting measurements.

The cluster analysis searches the parameter space of the pairs of measurements ($\phi(i), dt(i)$) to determine clusters of measurements with similar values, and is described more fully elsewhere (Teanby et al., 2004). Several sets of statistics are used to describe the clusters, the most important of which is the total variance of each cluster, $var(i)$. It depends on both the average variance of the individual measurements within each cluster and the variance of measurements within the cluster. The cluster with the minimum total variance is chosen as the best cluster, and within that cluster, the measurement with the minimum variance is chosen as the best measurement, and is used as the final measurement for that phase at that filter. Measurements from different filters are compared as discussed below.

The maximum number of clusters allowed for any measurement (M_{max}) is 15 and the minimum number of events per cluster N_{cmin} is 5 (Table 2)

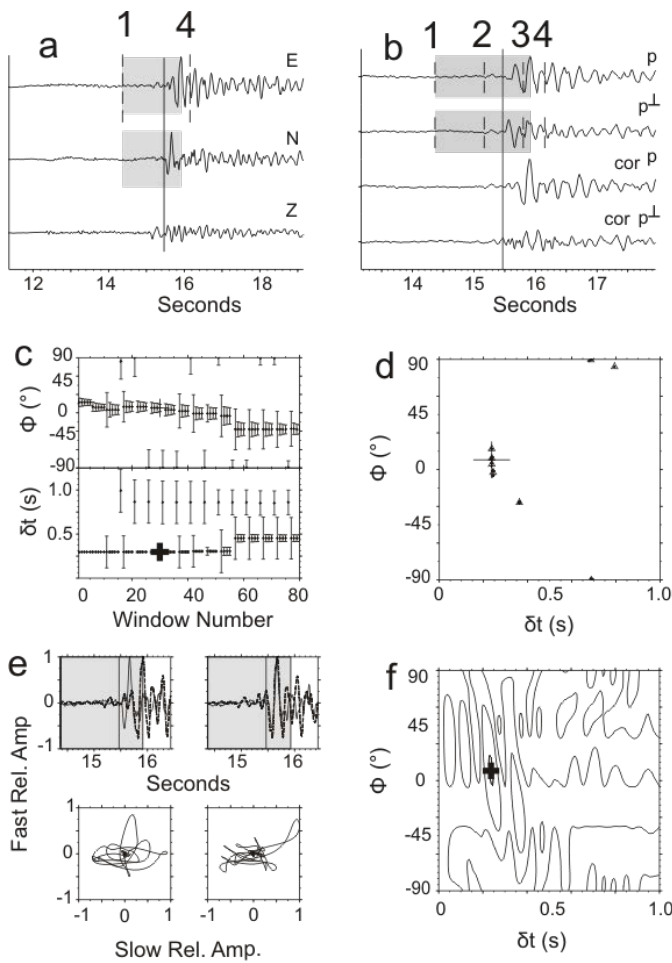


Figure 4 Sample C quality measurement, as in Figure 3. This sample presents good waveform fits and has a high SNR for the best measurements, but other windows have ϕ that vary by tens of degrees, so the measurement may exhibit cycle skipping.

very different shear wave splitting parameters. Let $var(k)$, $phi(k)$, $dt(k)$, and $Nmeas(k)$ be the average variance, fast direction, delay time, and number of measurements in cluster i , respectively. Let $kbest$ be the cluster number of the measurement with $var(kbest) = \min(var(k))$. This is the cluster chosen by the original SPLIT program to be the best measurement. $Nmeas(kbest)$ is thus the number of measurements in the best cluster. To consider clusters of similar quality, the cluster grading considers all clusters with $var(k) < 5 * var(kbest)$. Within these “OK clusters” we consider the differences between the fast directions and delay times of each cluster compared to the best cluster. Therefore, we define $phidiff = \text{abs}((phi(k) - phi(kbest)))$ and $tdiff = dt(k) - dt(kbest)$. Table 3 includes a description of the cluster grading methods. Another concern is for “null” measurements, which can occur when there is no anisotropy in the plane of the S wave particle motion, or when the initial shear wave is polarized along the fast or slow orientation of the medium, so that no orthogonal wave exists to split (see also Silver and Chan, 1991; Wüstefeld and Bokelmann, 2007). These null measurements must be treated separately from regular splitting measurements. We use a geometrical criterion (Peng and Ben-Zion, 2005; Savage et al., 1996); we compare the initial polarization Φ_{pol} determined from

2.4 Grading criteria

One problem plaguing shear wave splitting measurements is that of cycle skipping, in which the splitting program may mismatch waveforms by an integer number of half-cycles. If the waveform is mismatched by one half cycle, then the fast and slow waves may be interchanged, and dt differs by one half period (e.g., Matcham et al., 2000). This is particularly a problem with narrow band filters, and is a cause of concern at volcanic areas, because the stress field near a dyke is proposed to reorient by nearly 90° after the intrusion (Gerst and Savage, 2004). Even when cycle skipping is not present, sometimes a group of windows will include scattered phases that result in multiple solutions that differ from each other by values that are other than an integer half cycle or 90° . Most studies use manual checks to alleviate the problem, but it can be time consuming and also difficult to be objective during manual checks. So we introduce an automatic technique instead to eliminate events with multiple solutions.

We make a small modification to the original

FORTTRAN code to grade the events based on the cluster analysis. Instead of simply using the results from the best cluster, all clusters with event numbers above the minimum threshold $Ncmin$ described above (Table 2) are compared to the chosen “best cluster”. We try to reject events in which there are secondary clusters which are of similar quality to the best cluster, but have

the SC91 inversion program to the fast polarization ϕ . Measurements are considered as null, if they do not fulfill the criterion $20^\circ \leq |\phi - \Phi_{pol}| \leq 70^\circ$. For a uniform distribution of incoming polarizations, we expect 4/9 of the measurements to be rejected by this criterion.

Measurements that result in a delay time close to the maximum indicate cycle skipping or noisy data (Evans et al., 2006), therefore measurements close to the maximum dt are also rejected. The mean delay time obtained by (Gerst and Savage, 2004) for local earthquakes at Mt. Ruapehu in 2002 is 0.11 s for shallow events ($z < 35$ km) and 0.27 s for deep events ($z > 55$ km). For local events the delay times are generally expected to be between 0.1 and 0.6 s (Table 1 of Savage (1999)). Therefore we choose $tlagmax$, the maximum delay time for the grid search, to be 1.0 s and subsequently rejected all measurements with a delay time greater than $0.8 * tlagmax$. A final grade of *A* or *B* is made based on whether the event has a cluster grade of *Acl* or *Bcl*, values of the SNR and 95% confidence interval of the ϕ measurement (Table 3).

Finally, we developed a criterion based on our manual grading techniques, which involve examining the plots of the contours of the eigenvalues of the covariance matrix of the final best measurement (e.g. Figures 3, 4). A small range of contours indicates that the best result is not much better than the worst result. The 95% confidence interval is defined to have a value of 1, and the rest of the values are re-scaled so that their values are multiples of the 95% confidence value. We find the maximum value of the error contours and keep it as a parameter ($lamdamax$; Table 4) in our results files. In the Savage et al. (2010) study we use a value of 8 or greater to define a high quality measurement. The value of 8 was chosen because it left roughly the same number of measurements in the high quality manual (*A* and *AB*) and the automatic technique in an early implementation of the SNR criteria. This quantity is correlated with the SNR, and with the formal error bars of the final best splitting measurement, which we also include as grading criteria (errors in ϕ must be less than 25° for quality *A* and *B* events), and which is also based on the contours. However, the energy criterion is distinct, as it applies to the whole error surface, not just the region around the minimum. We found in later analysis at Piton de la Fournaise Volcano, that using 5 instead of 8 allowed more measurements without significantly increasing the scatter in the results, so we now recommend using a value of 5 as the default. Furthermore, for time variation studies to get enough measurements we sometimes go down as low as 3.

During the processing steps a number of parameters, including measurement results, quality criteria and event and station details are calculated that can be useful in further analysis. We keep track of these parameters in an ascii log file with 41 parameters for each measurement. A bash script is then used to compare the parameters to various values and rose diagrams are created to examine the results as a function of different quality criteria. Note that there may still be cycle skipping problems in the data, which can affect the measured incoming polarizations as well as the other parameters (Castellazzi et al., 2015).

2.5 Averages

Averaging of the individual measurements is carried out in the program **meanerr_summfiles_best** in the utility directory. To calculate average parameters over multiple events sampling the same anisotropy, we use Gaussian statistics for the delay times. For the polarizations we use the Von Mises criterion (Mardia, 1972), a circular analogue to the normal distribution. Along with the calculation of a mean fast polarization, a test for non-randomness must be conducted (Davis, 1986). The calculation for the mean of the polarizations involves adding unit vectors with orientations given

by the measured values and dividing by the number of measurements. The ambiguity of 180° in polarization is taken care of by doubling the angles before the vector addition, and halving the resultant angle. The length of the resultant vector, R , gives a measure of the misfit between 0 and 1. $R=1$ when all the polarizations are exactly lined up. Errors presented are the standard error, which is valid if the distributions are approximately normal. However, many of the distributions are bimodal and thus are not well described by normal distributions, so we recommend caution in using the averages and standard errors.

Table 3. Quality Criteria

Grade name	Criterion (mostly in program proses_graded but see also proses_xx , where xx has several values)
N (null)	If the fast polarisation ϕ is between -20 to 20 or 70 to 110 degrees of the incoming polarization
Dcl	Cluster D grade: If there is any cluster i for which the following holds: $nmeas(k) > Nmeas(kbest)/2$ and $var(k) < 5 var(kbest)$ and also: ($tdiff(k) > tlagmax/4$ or ($p/4 < phidiff(k) < 3p/4$))
Ccl	Cluster C grade: If the cluster is not D grade and there is any cluster i for which the following holds: $nmeas(k) > Nmeas(kbest)/2$ and $var(k) < 5 var(kbest)$ and also: $tdiff(k) > tlagmax/8$ or $\pi/8 < phidiff(k) < 7\pi/8$.
Bcl	Cluster B grade: If the cluster is not grade D or C and there is any cluster i for which the following holds: $var(k) < 5*var(kbest)$ and $nmeas(k) > Ncmin$ (5 here) and also: $tdiff(k) > tlagmax/8$ or $\pi/8 < phidiff(k) < 7\pi/8$
Acl	Cluster A grade: If the cluster is not grade D or C or B
ABPAR	based on parameters alone: not null, $dt < 0.8*tlagmax$, $SNR > 3$, $dphi < 25$
APAR	based on parameters alone: $dt < 0.8*tlagmax$, $SNR > 4$, $dphi < 10$, where $dphi$ = standard deviation of ϕ
AB	Cluster A or B, not null, $dt < 0.8*tlagmax$, $SNR > 3$, $dphi < 25$
A	Cluster A, $dt < 0.8*tlagmax$, $SNR > 4$, $dphi < 10$
Eng8	As described in text, maximum value of contour energy plots is greater than 8. This value was not used in the proses_graded code, and was applied after the fact. It is now included in code proses_gradebetter , which uses contours better than 5 and only uses S picks of grades 0, 1 or 2.

2.6 Use of multiple filters

Several of our earlier studies (e.g., Gerst and Savage, 2004) presented results from the same event-station pair using multiple filters in the rose diagrams and used these multiple filters in the averages. The rationale was that if an event had the same results at different filters, including it several times would effectively weight the results more heavily than if it had different results at different filters. However, such results should not have been treated with Gaussian statistics because the results from different filters will correlate with each other. It is also difficult to decide which filter results to compare with each other. Therefore, we recommend a further step, which is effectively another grading step: for a given event-station pair, if more than one filter produced a result that has passed the grading criteria, we compare the results and remove the entire measurement if they are too different from each other, using the criteria described above for the cluster grading, i.e., if the time difference is greater than $t_{lagmax}/8$ or if the angular distance is greater than $\pi/8$. If the results are similar, we choose the one with the smallest error bars, as calculated by the sum of the relative errors, $err = (dterr/dtmax + phierr*4/\pi)$ (Script `utilities/sel_bestmeas`)

2.7 System Requirements

The codes presented here are all free of charge and publicly available. They were developed using bash and shell scripts on the Linux Ubuntu platform. Fortran compilers, the GMT mapping and plotting software (Wessel and Smith, 1998) and the SAC analysis package (Goldstein and Snoke, 2005) are all used. The codes have had to be modified since the version of SAC changed to 101.6 and they now only work with versions SAC 101.6a and higher. The scripts have been written in bash. The data must be present as three-component SAC files (Goldstein and Snoke, 2005) and an *S* phase arrival time must be stored in the file header. The **TauP** toolkit (Crotwell et al., 1999) is used to calculate incidence angles, which are written to the results file and are useful for interpreting the data, but this toolkit is not required to obtain a measurement. To use this properly, a velocity file unique to the region studied should be given in top directory of `mfast`, in place of the present files `ak1`, in place of the present files `ak135_taupo.tvel` and `ak135_taupo.taup`. These are the only technical requirements to apply the method to any data from local earthquakes. Modifications for teleseismic earthquakes should be straightforward if the filter parameters are changed.

Starting with three-component files with *S* phase arrivals, data can be processed with a single command line and without any manual intervention. Using optimized compilers on a 4-year old Dell Latitude D620 laptop with a 1000 MHz CPU, it took about 0.5 minutes per measurement or 1.6 minutes per earthquake when three filters were used. Therefore, even with modest equipment, use of this technique is faster than conventional manual analysis.

3. Prerequisites to use the programs

The scripts to use the method can be found on the network at Victoria University at <http://mfast-package.geo.vuw.ac.nz>. Besides basic Unix tools the code requires some software packages to run:

SAC: Seismic analysis code. Version 101.6a or greater is required. Obtain from <http://www.iris.edu/manuals/>.

TauP: Seismic travel time utilities. Version 1.1.7 or later is recommended. Current files are in the format for version 2.1.1. Obtain from <http://www.seis.sc.edu/taup/>.

GMT: Generic Mapping Tools. Earlier versions up to Version 2.1 of mfast used GMT Version 4.2.X. This version 2.2 was modified to work with GMT 5.2.1. Obtain from <http://gmt.soest.hawaii.edu/> (last visited Sept. 9, 2016).

The *mfast/bin* directory needs to be included in the \$PATH variable of the shell's environment so that the programs can be found by the shell. To find out quickly if all required programs are installed properly, run **mfast_precheck**. This script prints a warning message to the screen if a program is missing or obsolete, or not sourced in the path correctly:

```
$ mfast_precheck
```

3.1 Customize paths and variables

The most commonly used settings and paths can easily be set by the user in the file *mfast_config*. Some parameters, such as the number of measurement windows for the cluster analysis, have a default value and do not necessarily have to be adjusted. Paths, however, need to be set up on each machine to run the programs, so that macros (subfolder *mfast/macros*) and shell scripts and binaries (subfolder *mfast/bin*) can be found by the programs. The script **mfast_precheck** will print an error message if the paths to the required directories and files are not set properly.

3.2 Programming style and syntax

A few basic shell scripting techniques (using BASH syntax) should be known for better understanding and easier use of the programs:

awk syntax: awk is a pattern scanning language that is used to extract certain content from logfiles.

To read the second and third column of a comma-delimited text file (data.txt), the command `<data.txt awk -F, '{print $2,$3}'` is used.

for-loops and processing of many events: Most of the programs and scripts are designed to process one event at a time. When processing many events at a time, a for-loop is used to call the program for each event until all events have been processed. If the command

```
$ mfast findfilt_prod -f eq1
```

is used to run the program **findfilt_prod** on the event eq1, then

```
$ for j in *.e; do mfast findfilt_prod -f ${j%.e}; done
```

will invoke the program for all events in the current directory. This might come with a loss of processing speed when handling many events at once (e.g. because programs like SAC have to be started and quit each time the for-loop is passed through), but allows straightforward separate processing of single events or custom subsets of events. The `${j%.e}` construct is used to strip the suffix `.e` from the filename.

command substitution: Variables are often set to the output of a command with the use of backticks.

When using `wordcount=`cat data.txt | wc -w``, the variable `wordcount` will be set to the output of the given command within the backticks (in this example, `cat` opens the file and `wc` counts the words in the document). Note the difference between regular ticks (') and the backticks (`) used in this example.

4. Download and convert data

Earlier versions of these codes include programs to download and convert data from the New Zealand Geonet network. However, because the Geonet network has changed its interface, we no longer include the programs in our package or in the manual.

4.1 Prepare data for splitting measurement (I)

While the splitting measurement routine has few requirements beyond an *S* arrival time, other utilities including the post-processing grading utilities use other information such as the event location and station location, so it is helpful to include as much information in the SAC headers as you can. The scripts expect the data to be organized by station directories in SAC file triplets with suffixes (.e, .n, .z) for East, North and Vertical components. The scripts expect *P* arrival picks in the 'a' header variable, and *S* arrival picks in either the 't0', 't5', or 't6' header variables, depending on which version of script **checkspick** is used. If the *S* arrivals have pick qualities in the header, those qualities will be saved in the output summary file for ease of use in selecting data. **Make sure you have a backup of your files before you run any of the next steps, which start out by cutting the files and overwriting the data so that they have a common length before the *S* arrival.**

SAC Header variables that are stored in the output summary file or used in the program or grading routines. Explanations are in parentheses, with names used in the scripts given in italics:

kstnm (*stat* station name)

evla (*evla* event latitude)

evlo (*evlo* event longitude)

evdp (*depthkm* event depth in km)

dist (*dist* station-event distance in km)

stla (*slat* latitude of station)

stlo (*slon* longitude of station)

nzyear (*year* year of earthquake)

kt5 (*pikgrd* grade of pick from 0 as best to 4 as not usable)

kzdate (*kzdate* Date of event in ascii format; *doy* Julian date)

o, t5 (origin time and *S* pick time are combined to make the *S* travel time variable *ttime*. t5 is needed to run the Teanby codes.)

RESP0, RESP1, RESP2, RESP3 and KRESP: These variables are used within the Teanby codes and must be unset before running the splitting codes. This is now done in the "checkspick" routines. The Teanby codes use these values to move from the seismogram reference frame to the e, n, z frame and if they are set wrongly, the splitting measurements could be reported wrongly.

user1 (*dist_ruap_deg*: distance in degrees from the event to a pre-defined point (originally the crater lake at Ruapehu; not used in the codes now)

user2 (*dist_ruap_km*: distance in km from the event to a pre-defined point (originally the crater lake at Ruapehu; not used in the codes now)

user5 (*anginc* Angle of incidence in degrees if code **mfast_logfiles_local** is used in processing. Otherwise *anginc* is set from the **TauP** codes. To get a proper angle of incidence, the velocity model must also be set in the variable TAUPMOD in *mfast_config*. There should be two files with the root name of the file set in TAUPMOD, ending in *.tvel* and in *.taup*. This is set in the code *mfast_logfiles*.

5. Processing of data for splitting measurement

The SAC format data can now be processed with the program **mfast_mfm**, a shell script that is used to start several other programs and that can process one single event or many events at once. Another script, **do_station_mfm**, is also available to call the commands in an order to conveniently process entire directories, moving problem data into separate subdirectories. **Do_station_local** and **do_station_verylocal** work with events that are closer and closest to the network, respectively. We first describe the workings of the individual routines.

Event data are prepared for splitting measurements and processed with the splitting measurement code. Finally the results are stored in a file and displayed in various ways. The programs that are mentioned in this section can be run without any arguments to display a manual that gives advice for the exact command syntax. A data file triplet is expected to have name suffixes *.e*, *.n* and *.z* for east, north and vertical component, respectively. Data files in this tutorial are named following a scheme: **2002.054.09.47.lhor2.e**, with year, Julian day, hr, min, station name and component. But other naming conventions are fine as long as the last letter is the component *e*, *n*, *z*. In fact, a preferred naming convention is one with a unique identifier for each earthquake.

The following steps will usually be applied to the data from a certain station and the commands are executed from within a stations directory, although the programs will work with other data structures as well. **Note that the seismograms will be cut and the original files are overwritten with these altered shorter ones in the next processing steps. It is advisable to create backups** (e.g. `$ tar cvfz lhor.tar.gz LHOR/` to create a backup archive of the directory LHOR). To analyse data from station LHOR, change to the directory for this station:
`$ cd LHOR`

5.1 Prepare data for splitting measurements (II)

The shear wave splitting measurement code has some requirements concerning the data files. The data file triplet is required to start at the same absolute time and therefore needs to be synchronised. Broadband data has to be down sampled and long seismograms have to be cut to prevent program crashes (The maximum length of a seismogram depends on the sampling rate. The cluster analysis program can handle a maximum of 10,000 samples). The S-pick time is saved in the header field *t5* of the north component file and events without any S-phase pick will not be included in any further

processing. All main scripts used from this step on are named with the prefix “**mfast** “. They should work with any local earthquake data set. If the files have been picked with the header variable *t0* as the *S* pick, then use the codes described here, which also preserve the pick grade from the header. If they have been picked with *t5* or *t6* as the *S* pick, use the code **mfast_checkspick_t5_or_t6**, which has the same calling structure. If some other header variable has been used, the codes could be modified. If data have been picked with both ‘*t5*’ and ‘*t0*’, the ‘*t5*’ values will be used. So if you repick data that has already been processed, be sure you remove all the ‘*t5*’ headers before running **checkspick**. You can do this by: in SAC,

```
SAC> read *.e *.n *.z
```

```
SAC>ch t5 UNDEFINED
```

```
SAC>wh over
```

Hints for picking:

One can put in the *P* and *S* picks expected for the origin time, using the **TauP** codes. Here's how to do it:

\$ taup_setsac -mod ak135 -evdpkm -ph p-8,s-9 filename, where filename is the SAC file you want to change. It puts *P* phases into t8 and *S* phases into t9. Note the small letters for local earthquakes. Best practice would have model ak135 changed to a local velocity structure.

To do for all events in the e component:

```
$ for j in *.e; do taup_setsac -mod ak135 -evdpkm -ph p-8,s-9 $j; done
```

The evdpkm means that the event depth is in km. If the depth is in meters, leave out that part of the line. It also of course needs to have had the origin time already set and depth etc. When looking at the waveforms, it is easiest to pick the arrival time on the clearest component, either E or N. Follow the directions in the **SAC** manual for **ppk** to pick the times. Simplified:

```
SAC> qdp off
SAC> read *.*
SAC> ppk perplot 3
```

[put the cursor at the start of where you want to look and type x, then move it to the end and type x again to expand it. O will return it to where you were. Pick by placing the cursor where you want to pick it, and typing “1s” or “2s” or “3s” or “4s” based on the quality. (“0s” is theoretically allowed, but unlikely ever to be used as it is usually for extra good *P* waves, and *S* waves are rarely as clean as *P* waves. “4s” is if you really think the pick is bad but don't know how to delete it). “n” will get you the next three traces. To finish, type q in the picking window, then wh over to save all your picks.]

There are more hints on picking in the comments at the start of the script **mfast_checkspick_gradepick**

5.2 Set the picks up in the proper headers and check inconsistencies

The code **mfast_checkspick_gradepick** should be used after the picking to set the headers properly for the SPLIT codes. The SPLIT codes need T5 on the E component. It calls SAC macro **mfast_checkspick_gradepick.m**, which does the following: It copies the picks from the t0 variable to the t5 variable on the N component so that the SPLIT code will use it. Also, it checks if the final t5 on the N component is less than the *P*-pick arrival time or the origin time of the event. In that case, it considers the event unpicked and rejects it. It also synchronizes the files to have the same start and end times and removes the means and detrends the data, and cuts the records around the *S* pick. If the sample rate is more than 100 Hz, it resamples the data so that it will not have too many points for the splitting codes to handle. Some groups picked the *S* arrivals on the t5 or t6 components and if that has been done, then the code **mfast_checkspick_t5_or_t6.m** should be used instead of **mfast_checkspick_gradepick.m**. The “checkspick” type codes are also now used to unset the values of RESP0, RESP1, RESP2, RESP3 and kRESP that are used by some groups for instrument response. The Teanby split codes will not work properly if these are set, so if you need them for another process, please keep your files separate.

\$ mfast_checkspick_gradepick

Run without any options to display a help message.

\$ mfast_checkspick_gradepick -f 2002.054.09.47.lhor2

Prepares the SAC files triplet **2002.054.09.47.lhor2.e**, **2002.054.09.47.lhor2.n**, and **2002.054.09.47.lhor2.z** for splitting measurements. The original files will be edited. Backups of the data files should be created before this step. Every file with an *S* pick in it will have another zero-length file created with the name **root.spick**, where **root** is the root name of the file. If there are no spicks the file **root.nospick** will be created. The script **do_station_mfm** in the **sample_data directory** moves these files to a directory called **nospicks** for possible repicking.

5.3 Find best filter

To improve the SNR and remove unwanted noise from the seismogram, the data can be filtered (Figure 2). The program **mfast_filt** allows one to quickly apply the same bandpass filter to a data set. It can also be used for an interactive selection of the best filter by visual inspection of the waveforms.

The program **mfast_findfilt_prod** has been developed to automate this task. It applies a set of different filters and ascertains the best one by calculating the SNR-bandwidth product (see next section). The number, type and corner frequencies of the tested filters are set in the macro **findfilt_prod.m**. Its methodology is described in Section 2.1.

\$ mfast_findfilt_prod

Run without any options to display a help message.

```
$ mfast_findfilt_prod -f 2002.054.09.47.lhor2
```

This applies a set of different filters to the event 2002.054.09.47.lhor2 and selects the three best filters for further analysis. The SNR has to be two or greater as a minimum requirement at this point. If no (or less than three) filters result in a file to fulfill this criterion, fewer files will be stored. In the given example, the file triplets 2002.054.09.47.lhor2.1-8.fb1.(enz), 2002.054.09.47.lhor2.0,8-6fb2.(enz) and 2002.054.09.47.lhor2.1-5.fb3.(enz) are created, where the corner frequencies of the bandpass filter are included in the filename and fb1, fb2 and fb3 mark the best, second best and third best filter respectively. The ranking is based on which filter has the largest SNR-bandwidth product. This naming scheme allows easy distinction for later analysis, when only the best filter for each event (*.fb1), or possibly more than one filter per event (*.fb1, *.fb2, *.fb3) are to be considered.

5.4 Calculate signal-to-noise ratio

The next step is to calculate the SNR. If the **mfast_findfilt_prod** routine was used, the SNR was already calculated, but if not, it is calculated in this step with a slightly different algorithm. (In case manually filtered or raw data are analysed the calculation is repeated here. The calculation takes less than half a second for each event on a 1.83 GHz computer.) For the shear wave splitting measurements, even a P-wave has to be considered as noise. Therefore, the noise-level is calculated from a window directly preceding the S-pick See section 2.2 for more explanations.

```
$ mfast_snr
```

Run without any options to display a help message.

```
$ mfast_snr -f 2002.054.09.47.lhor2
```

Calculate the SNR for 2002.054.09.47.lhor2.e and 2002.054.09.47.lhor2.n and write the arithmetic mean of these two values to a file 2002.054.09.47.lhor2.sn, along with back azimuth and Nyquist frequency.

5.5 Create configuration file and measure shear wave splitting

The SPLIT shear wave splitting measurement code automatically cycles through a given number of measurement windows. The number and range of the tested windows is determined by parameters in a configuration file. A general configuration file can either be used for all events or manually created for each single event. The waveforms of the events analysed in this and in the previous studies have a broad variation in terms of frequency content, so that a single configuration setup for all events led to erroneous results. Period lengths of the signal waveform usually vary between 0.7 to 2 s. To address this variability, a customised configuration file is created for every event before the actual splitting measurement with the program **ass_mfm** is done. Parameters used for these calculations are set in the file **create_event_ini.sh**.

The code **ass_mfm**, is a modified version of the SPLIT code, in that it prints out more information about the clusters to help in later evaluation, and it also grades the cluster based on properties of the clusters. A new subroutine called **zgrade_mfm.f** was written, and **zass_mfm.f** calls **zgrade_mfm** and also puts out a new file with more information in it. For compatibility with previous codes, the program does not change any of the files originally created. It makes new files with extensions "**clustnew**" and "**ilognew.ass**" to add to the previous files with extensions "**clust**" and "**ilog.ass**". The new files just put out more information. The grades are put into **ilognew.ass**. The grades are ACI, BCI, CCI, and DCI, and are described in section 2.4 and Table 3.

`$ assi_mfm -f 2002.054.09.47.lhor2 -s /path/to/file/ass.config.ini`

Do a splitting measurement on the event 2002.054.09.47.lhor2 and use the parameters given in the *ass.config.ini* file to determine start and end time ranges of the measurement window (Figure 3,4) number of measurement windows and other parameters. See Teanby et al. [2004] and the documentation in the *split_mfm* directory for descriptions of the input files.

Table 4. Fields of results log file (.res and .summ): The comma-delimited log file contains information about the event and the measurement results. See text for details. A description of all fields is given below. Fields of results log file (.res): The comma-delimited log file contains information about the event and the measurement results. See text for details. A description of all fields is given below. Results file parameters

1)	event	21)	δt [s]
2)	stat	22)	$D\delta t$ [s]
3)	slat [°]	23)	Φ [°]
4)	slon [°]	24)	$D\Phi$ [°]
5)	CUSPID	25)	anginc [°]
6)	year	26)	anginc _{corr} [°]
7)	doy det	27)	type ini
8)	evla [°]	28)	timestamp
9)	evlo [°]	29)	comment
10)	dist (ev–stat) [km]	30)	Nyquist frequency [Hz]
11)	depth [km]	31)	grade (A,B,C,N,R,U)
12)	magnitude	32)	filt LO [Hz]
13)	BAZ [°]	33)	filt HI [Hz]
14)	S_{pol} [°]	34)	$ S_{pol} - \Phi $ [°]
15)	DS_{pol} [°]	35)	Incidence angle with respect to crack plane
16)	wbeg	36)	Grade in pick header t0
17)	wend	37)	Lamda max
18)	dist Ruap [°]	38)	Ndf
19)	dist Ruap [km]	39)	Lambda2_min
20)	SNR	40)	Ttime [s]
		41)	Maxfreq (dominant frequency in S wave)

1. event: Name of the event and base name of the files. (2006.300.TUVZ.2644522.3-8.fb1)
2. stat: Station name. (TUVZ)
3. slat: Latitude of the station in degrees. (-39.26943)
4. slon: Longitude of the station in degrees. (175.65398)
5. cuspid: A 7-digit event identification number. (2644522)
6. year: Calendar year in which the event occurred. (2006)
7. doy det: Julian day on which the event occurred, with decimal digits giving the fraction of the day. (300.051)

8. evla: Latitude of the event hypocentre in degrees. (-40.862)
9. evlo: Longitude of the event hypocentre in degrees. (176.915)
10. dist (ev–stat): Distance between event hypocentre and station in km. (206.981)
11. depthkm: Epicentral depth of the event in km. (39.81)
12. mag: Event magnitude. For GeoNet data this is a local magnitude ML. (3.335)
13. BAZ: Back azimuth in degrees. This is the azimuthal angle at which the signal arrives at the station. (149.087)
14. spol: Initial polarisation of the shear wave in degrees. (41.805)
15. Dspol: Error of Spol in degrees, one standard deviation. (1.685)
16. wbeg: Start time of the selected measurement window in seconds, relative to the start of the seismogram at t =0 (25.652000)
17. wend: End time of the selected measurement window in seconds, relative to the start of the seismogram at t =0 (26.353741)
18. dist ruap km: Distance of the event hypocentre from Mt. Ruapehu in kilometres. The distance is given as a surface distance for a spherical earth with a radius $R = 6371\text{km}$ and is calculated from the point $39.281^\circ\text{S}/175.564^\circ\text{E}$ which is located at the centre of Crater Lake. (210.073)
19. dist ruap deg: Distance from Mt. Ruapehu in degrees. (1.88924)
20. SNR: Signal to noise ratio for this event. (5.43038)
21. tlag: Delay time between fast and slow shear wave in seconds. (0.870000)
22. dtlag: Error of δt in degrees, one standard deviation. (0.028125)
23. fast: Angle of the orientation of the fast shear wave, in degrees from North. (-62)
24. dfast: Error of ϕ in degrees, one standard deviation. (5.250)
25. anginc: Angle of incidence at the station, measured against a horizontal plane in degrees, where 0° means vertical incidence. (20.8)
26. anginc corr: Angle of incidence corrected for topography slope at the area around the station. (20.8)
27. type ini: Type of measurement. This field contains the measurement code that is used (ass), the number of measurement window start times nbeg and the number of window end times nend. (ass 3 25)
28. timestamp: Date at which the measurement was performed and the log file (.ilog.ass) was created. (2007-10-12)
29. comment: Any additional information or comment that can be added manually or set in **mfast_config**. (any text)
30. nyquist: Nyquist frequency of the event in Hz. The Nyquist frequency f_{nyquist} depends on the sampling rate of an event (f , in Hz), where $f_{\text{nyquist}} = f/2$.
31. gradeABCNR: Evaluation of the measurement quality. See Table 3
32. filt LO: Lower corner frequency of the bandpass filter in Hz. (3)
33. filt HI: Higher corner frequency of the bandpass filter in Hz. (8)
34. spol–fast: Angle between the initial polarisation and the fast orientation in degrees. This value is used to detect null measurements. (76.195)
35. Incidence angle with respect to the crack planes.
36. Grade in pick header t0. This is the grade that the analyst gave to the S arrival pick.
37. Lamda max. The maximum value of the eigenvalue of the corrected covariance matrix, which relates to the number of contour intervals are in the plots in Figure 3(f) in Savage et al. 2010.

Higher values have more distinct differences between the best and worst splitting values and indicate higher quality measurements.

38. *ndf*. The number of degrees of freedom in the measurement. Not used yet, but will be necessary for certain cases in which correct error bars for averaging multiple measurements is desired.

39. *lambda2_min*. The minimum value of the eigenvalue of the covariance matrix before it was scaled to have the 95% confidence level set to 1. This is the value that was used to do the scaling. This value may be important in later error analysis.

40. *ttime*. The *S*-wave travel time between the earthquake and the station. Determined from the SAC headers *o* and *t5*.

41. *maxfreq*. The dominant frequency in the *S* wave, determined from the frequency at the maximum spectral amplitude.

\$ **assi_mfm** -f 2002.054.09.47.lhor2 -c Create an event-specific configuration file and use the parameters in this file for the splitting measurement. The splitting measurement is done with the program **ass_mfm** (Teanby et al., 2004), modified to include automatic grading, and logfiles (*event.ilog.ass* and *event.ilognew.ass*) are created. The file with the extension *ilog.ass* is the original format of the SPLIT codes, while *ilognew.ass* has the same information but with two extra columns—one containing the cluster grade and another with the number of degrees of freedom in the best measurement. The start and end time ranges of the measurement windows are calculated with the SAC macro **get_T2** that also calculates the main frequency f_d of the shear wave. See Section 2.3 for details. After the calculation of the main frequency of the shear wave, the minimum and maximum window end times are derived, where the minimum window end time is by default set to $5/6 \cdot T$ and maximum end time to $2.5 \cdot T$, where *T* is the dominant period of the shear wave. (A small offset of 0.15 s is added to account for some slightly early *S* picks). These values prove to be a good compromise between allowing longer measurement windows that possibly suffer from interfering secondary phases and shorter windows that result in less stable measurements.

Several new files will be created when a splitting measurement is done. The script **mfast_logfiles** is used write results to a log file. For each measurement, a results file (extension .yyyy-mm-dd.res where the first part is the date of the processing) with relevant event details, measurement parameters and measurement results is created. A description and example content for every field is listed below Table 5.

\$ **mfast_logfiles** -f 2002.016.lhut

This command will create a file 2002.016.lhut.res which contains the fields as described above. This does not need to be done if the measurement has been done with the script **assi_mfm**, in which case the .res file is automatically created.

\$ **mfast_logfiles** -a

The -a option will write the .res files for all measurements in the current directory. This can be used if some result files were deleted or to assure that a result file for each measurement is present.

\$ **mfast_logfiles** -s

This command is used to create one summary file (.summ) of all measurements in the current

directory. It should be used after all events in a directory (e.g. one year's data from one station) have been processed. The summary file contains the same fields as the results file (see Table 6) and will have one line per measurement.

\$ **mfast_logfiles_local** was modified from **mfast_logfile** to put in the angle of incidence from the SAC user5 variable, as was set calculated from the location programs and the velocity files that were used in the routine processing, which is considered better than using the default values in the TauP codes.

\$**mfast_logfiles_agathe** is the same as **mfast_logfiles_local** but it adds two variables, **utmlat** and **utmlon**, which are latitude and longitude in utm coordinates (distance in m from a specific point) for use in plotting.

Table 5. A list of all the files made, with explanations. See also the documentation provided with the SPLIT codes.

File extension	Explanation
<i>date.res</i>	As explained beneath description of <i>assi_mfm</i> .
<i>ass_auto.log</i>	output from the code that give intermediate steps and results of possible interest especially in debugging
<i>assdone</i>	Zero-length file that is used to tell the automatic codes not to recalculate the splitting part of this measurement.
<i>clusters</i>	Information about the results from different clusters—set in the original SPLIT codes
<i>clustnew</i>	Same as <i>clusters</i> but containing new information about the grading
<i>clustxy</i>	Information to be used for plotting the clusters
<i>done</i>	Zero-length file that is used to tell the automatic codes not to recalculate this measurement.
<i>error</i>	The error surface for plotting e.g. figure 3 and 4 e in Savage et al. 2010
<i>freq</i>	The dominant frequencies of the components within a window about the <i>S</i> wave
<i>gmt</i>	Used for plotting
<i>ilog.ass</i>	Output data from the splitting measurement
<i>ilog.assnew</i>	Same as <i>ilog.ass</i> but containing more information
<i>ini</i>	The initialization file used to make the measurement with the SPLIT codes
<i>pm</i>	Particle motion for plotting
<i>pmc</i>	Corrected particle motion for plotting
<i>af</i>	Slow and fast wave for plotting
<i>sfc</i>	Corrected slow and fast wave for plotting
<i>sn</i>	SNR of various filters
<i>soln</i>	Solution results to put onto plot
<i>src</i>	Corrected component parallel to the initial particle motion
<i>sro</i>	Original component parallel to the initial particle motion
<i>ss</i>	Uncorrected slow wave
<i>ssc</i>	Corrected slow wave
<i>stc</i>	Corrected component perpendicular to the initial particle motion

<i>sto</i>	Original component perpendicular to the initial particle motion
<i>snprodlst</i>	List of the product of SNR and bandwidths for the filters to be compared
<i>spick</i>	Zero-length file telling the automatic codes that the measurement has an <i>S</i> arrival picked in the SAC header.

5.6 Display results

Measurement results can be illustrated in individual measurement plots, rose diagrams, split maps that show individual measurements as bars on a map, and several other analysis plots. The programs to display these results work in two steps. First, they read out the summary file and select and reject several events according to certain quality criteria. Second, they create a PostScript figure that illustrates the results that have passed the selection step.

\$ ass_plot_mfm.sh 2002.050.05.34.lhut2.2-3.fb1

This will create a measurement analysis plot (Figure 3). This analysis plot is composed of six individual plots and a text box with event information and measurement results. The file containing the analysis plot is named with a prefix *all6_*, e.g. *all6_2002.050.05.34.lhut2.2-3.fb1.ps*. The individual plots are also stored as individual files and have the event name (2002.050.05.34.lhut2.2-3.fb1) and a suffix (*_wind.eps*, *_rt.eps*, *_fs.eps*, *eventinfo.eps*, *_error.eps* and *_clusters.eps*). The program only needs the event name as an argument.

\$ proses_graded -t 0.8 -f *.summ. Display measurement results of the fast orientation ϕ in a rose diagram. A cut-off delay time can be passed to the program (-t option) to reject events with a too high delay time. The program displays six rose diagrams by default. It uses the quality criteria discussed in Savage et al (2010) to distinguish different rose diagrams (Figure 5). Summary file outputs containing different quality measurements used in each rose diagram are also made. Output is put into rose diagrams that are coded by the station name, but the .summ files have no station name in them yet.

roseABC.sta and **selroseABC.summ**: (Cluster grading of A,B, or C. Nulls by the incoming polarization criterion are allowed in, and SNR is not checked except that the measurement only is attempted if the initial SNR of the filtered seismograms was good enough.

roseAB.sta and **selroseAB.summ**: Cluster grading of A or B. Not a null according to the polarisation criterion (i.e., the result is between 20 and 70 degrees from the incoming polarisation direction). SNR greater than 3 and delay time less than dtmax set with the -t option (defaults to 0.8). Maximum error in phi is ≤ 25 degrees.

roseA.sta and **selroseA.summ**. Cluster grading of A. Not including nulls according to incoming polarization-back azimuth criterion (i.e., the event is between 20 and 70 degrees from the incoming polarisation direction). SNR greater than 4 and delay time less than dtmax set with the -t option (defaults to 0.8). Maximum error in phi is ≤ 10 degrees.

roseABshortdt.sta and *selroseABshortdt.summ*. Same as *roseAB* but max dt is dtmax/2.

roseABpol.sta Just the incoming polarisation directions of the A and B events.

rosenullgrade.sta: Grades of A and B from the cluster analysis that were considered null by the polarisation/back azimuth criterion.

\$ proses_old_noprint -t 0.8 -f *.summ

Display measurement results of the fast orientation ϕ in a rose diagram (Figure 6). A cut-off delay time can be passed to the program (-t option) to reject events with a too high delay time. The program displays six rose diagrams by default. For each deep and shallow events, it plots two rose diagrams of the fast orientation with different quality criteria and a diagram showing null measurements at the bottom. Parameters can be passed on as arguments or can be set directly in the *proses_old_noprint* script. The program can be run without any arguments to display a help message.

LHOR2, Qual A,B,C 100 events LHOR2, AB events with dt < 0.4 s 88 events

Mostly temporary files are created to make the

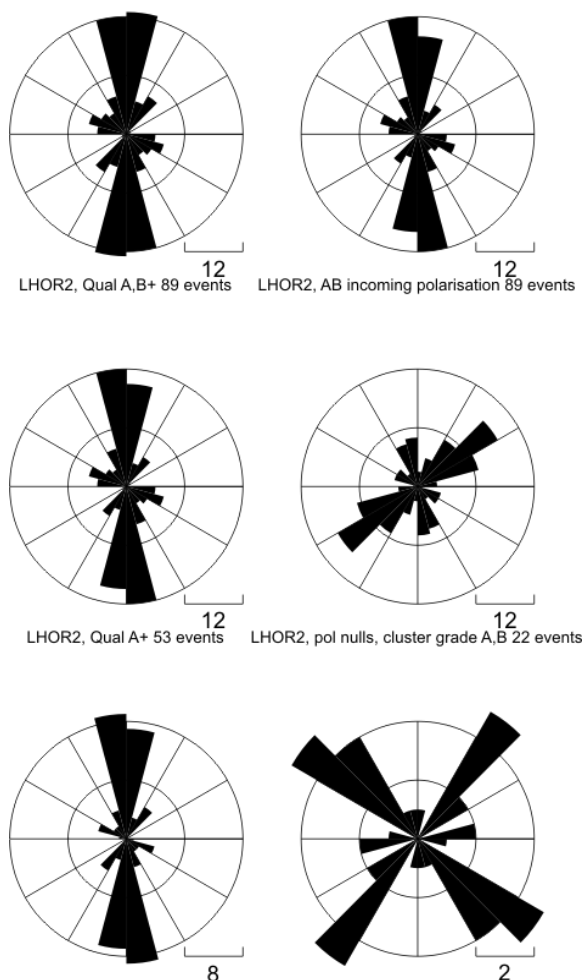


Figure 5 Rose diagram plots from *proses_graded* to display in the results of several measurements for station LHOR in 2002.

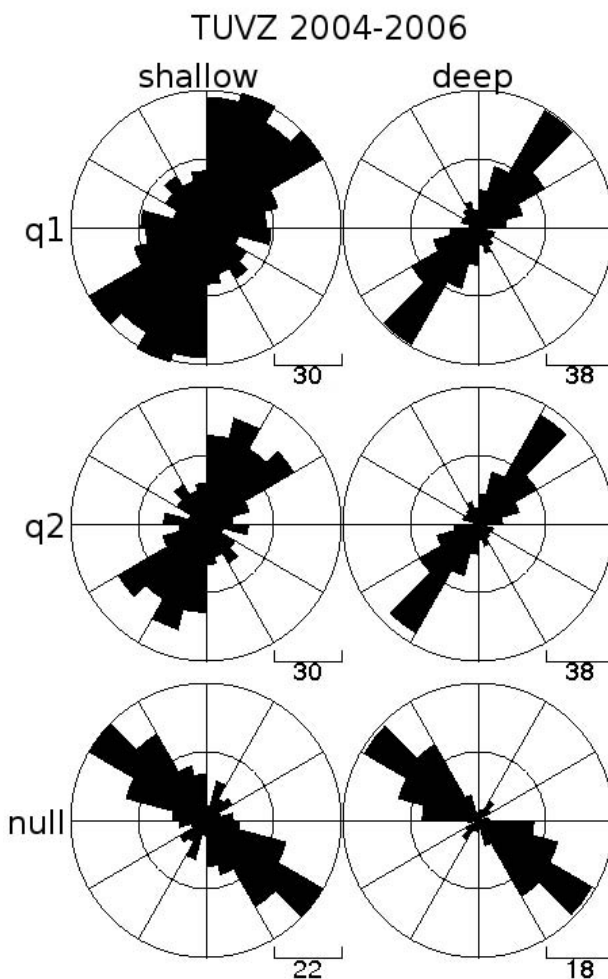


Figure 6 Rose diagram plots from *proses_old_noprint*. Results from GeoNet station TUVZ for all data from 2004 to 2006.

plots. The six plots represent the results of the different type of grading carried out. These plots take into account both the new machine grading from the cluster analysis and also grading criteria based on the measurement results. We also print out the different types of files in selected .summ files to be able to compare more information about the records. The grading scheme is:

\$ proses_gradebetter -f \$1.*.summ -s \$1 -t 0.8

This is the same as proses_graded except that it includes a check for the “better” criterion below.

roseABC.sta and **selroseABC.sta.summ**: (Cluster grading of A,B, or C. Nulls by the incoming polarization criterion are allowed in, and SNR is not checked except that the measurement only is attempted if the initial SNR of the filtered seismograms was good enough.

roseAB.sta and **selroseAB.sta.summ**: Cluster grading of A or B. Not a null according to the polarisation criterion (i.e., the result is between 20 and 70 degrees from the incoming polarisation direction). SNR greater than 3 and delay time less than dtmax set with the -t option (defaults to 0.8). Maximum error in phi is <=25 degrees.

roseA.sta and **selroseA.sta.summ**. Cluster grading of A. Not including nulls according to incoming polarization-back azimuth criterion (i.e., the event is between 20 and 70 degrees from the incoming polarisation direction). SNR greater than 4 and delay time less than dtmax set with the -t option (defaults to 0.8). Maximum error in phi is <=10 degrees.

roseABshortdt.sta and **selroseABshortdt.sta.summ**. Same as roseAB but max dt is dtmax/2.

roseABpol.sta Just the incoming polarisation directions of the A and B events.

rosenullgrade.sta: Grades of A and B from the cluster analysis that were considered null by the polarisation/back azimuth criterion.

rosebetter.sta and rosebetter.sta.summ The measurements pass the AB criteria, and in addition, the minimum labdamax is greater than 5, and only S picks from 0, 1, and 2 are used.

5.7 Further ways to select measurements:

In the Savage et al. Mfast paper (Savage et al., 2010), figures were made in which the frequencies were selected from the same manner as the cluster analysis, i.e., the top three measurements were compared and were thrown out if they were not close enough to each other. That code is in the utilities directory and is called **sel_bestmeas**. The way to use it is to say:

\$sel_bestmeas filename.summ

Where **filename.summ** is the summary file you want to work with.

Also, some figures used the “**eng8**” selection, which was to choose only measurements in the summary files that had **lamdamax > 8**. That is done by the following command:

```
$awk -F, '{if ($37 > 8) print $0}' <filename.summ >filename.eng8.summ
```

This is now not necessary if you use the rosebetter grade with the criteria of 5 instead of 8, but the command is included here in case somebody wants to do a different check or similar selections could be made according to any of the columns desired in the .summ files.

6. Automatic measurement and monitoring tool

To simplify the use of the programs and to keep manual user input to a minimum, the script **mfast_mfm** can be used to invoke all commands that are listed above. Starting with a triplet of SAC files, this allows the user the automated processing of one or many events with a single command. However, we have found that sometimes it is more straightforward to run parts of the commands with checks in between to remove unwanted files. This is accomplished using script **do_station_mfm**, which can easily be modified to stop at whatever step is desired.

```
$ mfast_mfm -f 2004.002.FWVZ.2165587 -p -r
```

This command is used for the processing of one event that is passed to the script with the -f option. The data are byteswapped, an S-Pick is stored in the SAC file header, the seismograms are synchronised and cut, the SNR is calculated, a configuration file is created, the measurement and the cluster analysis are done and the results are written to a log file. However, there are some minimum requirements to run all steps. If no S-Pick is found in the file header or the SNR is less than 2, the processing will be interrupted and the user is informed by an error message printed to the terminal. The script **do_station_mfm** gets around this by creating directories of problem files and allowing the calculation to continue on the other files.

The next commands will process all files in the current directory by invoking a for loop. This is an easy way to handle large data sets. These commands do not need to be typed manually. They can be copied from the terminal text that is printed to the screen by just invoking **mfast** without any arguments. The **do_station_mfm** script invokes these types of commands.

```
$for j in *.e; do if [ ! -f "${j%.e}*.done" ]; then mfast_mfm -x 9 -f ${j%.e}; fi; done
```

This command invokes the program **mfast_findfilt** and automatically selects up to three bandpass filters that give the best SNR for each event. This is an optional step, but raw data rarely give good results when local events are analysed.

```
$for j in *.fb1.e; do if [ ! -f "${j%.e}*.done" ]; then mfast_mfm -r -f ${j%.e}; fi; done
```

Again, this command line does not need to be typed by the user. By running **mfast_mfm** without any options, some commonly used command lines are printed to the terminal and can simply be copied. All events for which a sufficiently good filter has been found are now analysed for shear wave splitting. The for loop now includes the events with the best filter that was found (*.fb1.e). For sparse data sets it is possible to include also the second- and third best filter for each event by adding

*.fb2.e and/or *.fb3.e to the for loop. This is done in the **do_station_mfm** script.

Starting with a directory containing several SAC file triplet, the **do_station_mfm** script checks the *S* picks, prepares the data, finds the best bandpass filters for each event, performs the measurements, write a summary log file and display the results in a rose diagram (**proses_graded**). At the end, the code “**archive.sh**” is used to move intermediate files into directories and make them into tar files to make the directories more manageable. A “Cheat sheet” at the end of this Manual gives a quick overview of all commands and programs.

7. Utilities

The directory “utilities” accompanying this package has some programs that were useful for display and analysis. They do not work in the automatic fashion of the other programs, and they will need to be modified for use with other datasets. They are included only as a guide and help to individuals who are interested in creating their own script: we do not plan to support them. There is some documentation within the scripts themselves. Here is a description of the programs and how some of them are used:

corr_arrival_angle Corrects the angle of incidence for a dipping surface.

crampin_band.awk: This code should not be necessary if **mfast_logfiles** was used. It calculates the angle of the propagation vector with respect to the crack plane, which is assumed to be vertical and oriented parallel to the fast polarization measurement.

crampin_band_inputcrack.awk: Same as above, but the crack planes are assumed vertical with the orientation given in an argument to the file.

meaner_summfiles_more_all Program to calculate means of parameters in the .summ files using circular statistics or straight Gaussian statistics depending on the variable.

kappa, window_*: used in the averaging programs and **overlay_sta_file_errbar.gmt**.

overlay_sta_file_errbar.gmt and similar: Create plots of moving averages with error bars. Uses some of the other files in the directory.

sel_bestmeas: Checks files with measurements at more than one filter. It leaves out events with results that are too different for different filters, and otherwise chooses the filter with the best results.

do_station_mfm_jj: A modification of **do_station_mfm** created by Jessica Johnson to work with a different directory structure. It also calls archiving script **archive.sh** to clean up the directory after execution so that many of the files created in the earlier steps are stored in archive folders.

mapping_utilities: A folder with various mapping utilities, such as:

map_taupo_eventnos.bash: A bash script to create a map with rose diagrams, used in the region of Taupo, New Zealand and provided by Katharina Unglert.

05km_proj: A folder with various files used to create plots for splitting measurements plotted at the point where the ray between the earthquake and the station pierces the 5 km depth projection. This program assumes a straight-line ray path, i.e., a homogeneous velocity model, and uses the angle of incidence to back-project the position, regardless of the earthquake depth. For example, an earthquake with depth of 2 km will be plotted at the same position as one of 10 km with the same incidence angle. So it is not meant to give an accurate location of the piercing point, but merely to give an indication of the back-azimuthal patterns that occur for the splitting measurements at any given station.

8. Third party software used for this study

Essential parts of this work have been done with the help of the following software and tools:

Interpreters: **bash**, **csh**

SAC 101.6a Seismic analysis code was used to load, plot, filter, edit and process the seismograms. See Goldstein and Snoke [2005].

GMT 4.2.0 Most of the plots and almost all of the maps were created with the Generic Mapping Tools developed by Wessel and Smith [1998].

SPLIT cluster analysis code. The cluster analysis code developed and published by Teanby et al. (2004) constituted the core of the programs that have been used. During the project, source code and scripts have been modified to adjust to the requirements of this specific study. The code was compiled with the free compiler **g77** and **gfortran**. For a more detailed description of this code see the original publication or Wessel (2008).

gfortran Fortran compiler **gfortran** was used to compile the cluster analysis code.

TauP: The **TauP** toolkit codes version 2.1.1 are used in the analysis (Crotwell et al., 1999).

Unix tools: **cat**, **awk**, **sed**, **grep** and many more.

9. Cheat sheet

The next two pages contain a short guide to use the automatic shear wave splitting measurement programs and can be printed or copied for reference. Some of the programs require certain environment variables to be set. Further information can be found in the according Readme and manpages. Although the shell scripts have been mainly developed following Bash syntax, several GMT scripts use the C shell as an interpreter and not all of them were rewritten into Bash syntax. As Bash and Csh are both freely available, it is recommended to have both set up when running the scripts. The programs can be started from a Bash or Csh environment, because the scripts select their correct interpreter with a special command in the first line (e.g. `#!/bin/bash`).

get data (Done outside **mfast** codes)

- select events, retrieve via your favourite method for your seismic network.
- byteswap data (if extracted on another machine)
- write the S-phase picks into the files

preparation (in station directory through **mfast** codes)

- check S-pick
- apply filter
 - raw data – one filter for all data
 - find best filter automatically
- calculate signal to noise ratio (SNR)

splitting measurements and cluster analysis (time-and CPU-intensive)

- create an event-specific `ass.ini` configuration file (considers different window ranges according to the period length of the event; selects a reasonable number of windows and step length)
- write logfiles (*.res*, *.summ*)
- reads all information from several files
- creates a `.res` results file for each event
- creates a `.summ` summary file for each station for further analysis
- quality control (signal to noise ratio, maximum delay time, maximum error for ϕ , stable windows, null measurements)
- analysis plots (*all6*) for visual quality control (e.g. linearity of the particle motion) of single measurements
- rose diagrams (for each station)
- splitting on a map, density plots of parameters vs. depth (to look for spatial changes)
- splitting parameters vs. time (to look for temporal changes)

Quick command guide:

Starting with SAC file triplets which have S-phase picks stored in the header field `t0`, the following commands can be used to automatically do shear wave splitting measurements with all events in the current directory. These commands can be copied from the screen when invoking the command **mfast_mfm** without any options.

- Prepare: `$for j in*.e; do if [! -f "${j%.e}*.done"]; then mfast_mfm -p -f ${j%.e}; fi; done`
- Filter: `$for j in*.e; do if [! -f "${j%.e}*.done"]; then mfast_mfm -x 9 -f ${j%.e}; fi; done`
- Measurement: `$ for j in*.fb1.e; do if[! -f"${j%.e}*.done"]; then mfast_mfm -r -f ${j%.e}; fi; done`
- Further analysis:

mfast_mfm_logfiles -s;

proses_graded -t 0.8 -f *.summ

- All in one step: `for j in *.e; do if[! -f"${j%.e}*.done"]; then mfast_mfm -p -f ${j%.e}; fi; done; for j in *.e; do mfast_mfm -x 9 -f ${j%.e}; done; for j in *.fb1.e;do if[! -f"${j%.e}*.done"]; then mfast_mfm -r -f ${j%.e}; fi; done; mfast_mfm logfile -s; proses_graded -t 0.8 -f *.summ`

10. Trouble Shooting

The codes have been tested on Dell Laptops running Ubuntu Linux and also on Red Hat Enterprise Linux version 5, and both work. They were also tested on a MacOSx operating system by Kohtaro Araragi, and the following changes needed to be made if the Mac system is used:

The plotting codes that use the Linux command `sed` have to be changed from: `[sed -i]` to `[sed -i "" -e]` in the following codes: **ass_plot_mfm.sh**, **proses_old_noprint**, **proses_mfm**.

Most problems stem from either the paths or the SAC files not being set up properly. If problems are found, the best procedure is to break down the steps into smaller ones. For instance, instead of running the script **do_station_mfm**, copy and paste each line of it into your directory to run it one line at a time and on one file at a time to find in which code the problem lies. Then do the same for the script that it is calling, etc. Many of the scripts have “print” or “echo” commands that are commented out now, but which can be un-commented to trouble shoot problems.

The file *filenamebase.auto.log* contains some of the input and output used in the code, and can help with trouble shooting. Also, as you run through each step, look for the most newly created files and check that they include the needed information (e.g., `ls -lrt` will print a list of files in your directory with the most recent files at the bottom).

References

- Castellazzi, C., MK Savage, E Walsh and R Arnold, Shear-wave automatic picking and splitting measurement at Ruapehu volcano, New Zealand, *Journal of Geophysical Research - Solid Earth*, doi:10.1002/2014JB011585, 2015.
- Crotwell, H.P., Owens, T.J., and Ritsema, J., 1999, The TauP Toolkit: flexible seismic travel-time and ray-path utilities: *Seism. Res. Lett.*, v. 70, p. 154–160.
- Davis, J.C., 1986, Analysis of directional data, *Statistics and Data Analysis in Geology - Second Edition*, John Wiley & Sons, Inc., p. 314-330.
- Evans, M.S., Kendall, J.-M., and Willemann, R.J., 2006, Automated SKS splitting and upper-mantle anisotropy beneath Canadian seismic stations: *Geophysical Journal International*, v. 165, p. 931-942.
- Gerst, A., 2003, Temporal Changes in Seismic Anisotropy as a New Eruption Forecasting Tool, Victoria University of Wellington, New Zealand.
- Gerst, A., and Savage, M.K., 2004, Seismic anisotropy beneath Ruapehu Volcano: A possible eruption forecasting tool: *Science*, v. 306, p. 1543-1547.
- Goldstein, P., and Snoke, A., 2005, SAC availability for the IRIS community: *Incorporated Research Institutions for Seismology Newsletter*, v. 7.
- Greve, S.M., Savage, M.K., and Hofmann, S.D., 2008, Strong variations in seismic anisotropy across the Hikurangi subduction zone, North Island, New Zealand.: *Tectonophysics*, v. 462, p. 7-21.
- Johnson, J., Prejean, S., Townend, J., and Savage, M., 2010, Anisotropy, repeating earthquakes, and seismicity associated with the 2008 eruption of Okmok Volcano, Alaska: *Journal of Geophysical Research*, v. in press.
- Mardia, K.V., 1972, *Statistics of Directional Data*: New York and London, Academic Press.
- Matcham, I., Savage, M.K., and Gledhill, K.R., 2000, Distribution of seismic anisotropy in the subduction zone beneath the Wellington region, New Zealand: *Geophysical Journal International*, v. 140, p. 1-10.
- Peng, Z., and Ben-Zion, Y., 2005, Spatiotemporal variations of crustal anisotropy from similar events in aftershocks of the 1999 M7. 4 Izmit and M7. 1 Düzce, Turkey, earthquake sequences: *Geophysical Journal International*, v. 160, p. 1027.
- Savage, M.K., 1999, Seismic anisotropy and mantle deformation: what have we learned from shear wave splitting?: *Reviews of Geophysics*, v. 37, p. 65-106.
- Savage, M.K., Duclos, M., and Marson-Pidgeon, K., 2007, Seismic Anisotropy in the South Island, New Zealand, *in* Okaya, D., Stern, T., and Davey, F., eds., *A Continental Plate Boundary: Tectonics at South Island, New Zealand*, Volume 175, *Am. Geophys. Union Geophys. Monograph Series*, p. 95-116.

- Savage, M.K., Ohkura, T., Umakoshi, K., Shimizu, H., Kohno, Y., Iguchi, M., Wessel, A., and Mori, J.V., 2008, Variations in Seismic Anisotropy with time on Volcanoes in Kyushu Island, Southern Japan: *Eos Trans. AGU*, v. 89 p. S53A-1813.
- Savage, M.K., Sheehan, A.F., and Lerner-Lam, A., 1996, Shear-wave splitting across the Rocky Mountain Front: *Geophysical Research Letters*, v. 23, p. 2267-2270.
- Savage, M.K., Wessel, A., Teanby, N., and Hurst, T., 2010, Automatic measurement of shear wave splitting and applications to time varying anisotropy at Mt. Ruapehu volcano, New Zealand: *Journal of Geophysical Research B: Solid Earth*, v. submitted 2010.
- Savage, M.K., Ohminato, T., Aoki, Y., Tsuji, H., and Greve, S., 2010, Absolute stress and its temporal variation at Mt. Asama Volcano, Japan, from seismic anisotropy and GPS: *Earth & Planet. Sci. Lett.*, v. 290, p. 403-414.
- Silver, P.G., and Chan, W.W., 1991, Shear wave splitting and subcontinental mantle deformation: *J. Geophys. Res.*, v. 96, p. 16429–16454.
- Teanby, N., Kendall, J.-M., and van der Baan, M., 2004, Automation of shear-wave splitting measurements using cluster analysis: *Bull. Seism. Soc. Amer.*, v. 94, p. 453-463.
- Walsh, E., R. Arnold and M. K. Savage, 2013, Silver and Chan Revisited, *Journal of Geophysical Research*, 118, 1-16, doi: 10.1002/jgrb.50386, Volume 118, Issue 10, p. 5500-5515.
- Wessel, A., 2008, Automatic shear wave splitting measurements at Mt. Ruapehu volcano, New Zealand [MSc thesis]: Wellington, Victoria Univ. Wellington.
- Wessel, P., and Smith, W.H.F., 1998, New, improved version of the Generic Mapping Tools Released: *EOS Trans. AGU*, v. 79, p. 579.
- Wüstefeld, A., and Bokelmann, G., 2007, Null Detection in Shear-Wave Splitting Measurements: *Bulletin of the Seismological Society of America*, v. 97, p. 1204-1211.